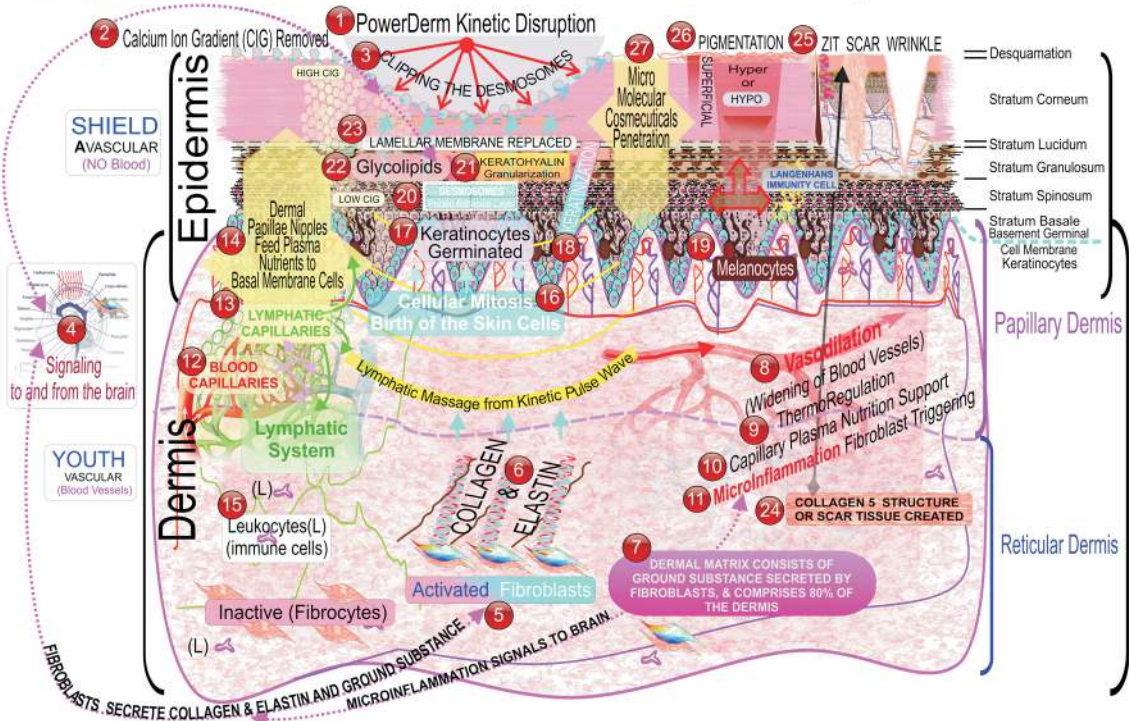


POWERDERM KINETIC DERMABRASION

Epidermal & Dermal Responses



13 Lymphatic System Responses

- Hyper-Circulation of Blood & Lymphatic Systems**
 - 28. Creates Blood Vessel Vasodilation
 - 29. Stimulates Blood Circulation throughout Dermis
 - 30. Stimulates Blood Capillary Plasma Release into Interstitial Fluids
- Removal of Interstitial Trash & Pathogens**
 - 31. Removes Toxic Cellular Debris
 - 32. Removes Metabolic Cellular Waste and Toxins
 - 33. Removes Dead Skin Cells in the Interstitial Spaces
 - 34. Removes Stagnant Dermal Interstitial Fluids
 - 35. Removes Viral & Bacterial Pathogens
 - 36. Dissolves Unbound Proteins (cellular debris)
 - 37. Dissolves Dermal Acneic Scars-Collagen 5
 - 38. Circulates Lymphocytes (T-Cells) in Blood & Lymphatic Vessels
 - 39. Transports Antigen Clearing Langenhaus Cells to Lymph Nodes
- Balances Hormonal Distribution**
 - 40. Distributes Anti-Aging DHEA to improve Collagen, Tone, Wrinkles
 - 41. Distributes Progesterone
 - 42. Distributes Estrogen
 - 43. Distributes Testosterone and Aids Collagen retention in Aged Skin
 - 44. Distributes Peptide Hormone Prolactin
- Increases & Equalizes Blood Plasma Vitamin Nutrients to Dermis & Epidermis**
 - 45. Blood Plasma Vitamins
 - 46. Blood Plasma Antioxidants
 - 47. Blood Plasma Amino Acids
 - 48. Blood Plasma Natural Peptides
 - 49. Blood Plasma Nutrients into Epidermis through the Basal Membrane
 - 50. Supports Optimal Cellular Mitosis Replication
 - 51. Restores Health & Vitality to Skin

7 Dermal Matrix Responses

- Initiates Collagenic Matrix Rebuilding**
 - 52. Massage Friction creates Microinflammation
 - 53. Microinflammation triggers Fibroblast Secretions
 - 54. Fibroblasts Secretion Increases Collagen Peptides
 - 55. Fibroblasts Secretions Increases Elastin Peptides
 - 56. Fibroblasts Secretion Increases Dermal Matrix Ground Substance
 - 57. Fibroblasts Secretion Increases Hyaluronic Acid
- Improves Skin Appearance and Functioning**
 - 58. Distributes Body's Own Natural Hyaluronic Acid to Epi/Dermis
 - 59. Flushes Melanin from Epidermis—Remediating Hyperpigmentation
 - 60. Balances Melanocyte Health to Reverse Hypo-pigmentation
 - 61. Distributes Oxygen for Healthy Cell Function
 - 62. Distributes Optimized Nutritional Support of Collagen & Elastin Synthesis
 - 63. Distributes Optimized Nutritional Support of Cellular Amino Acid Proteins & Peptides
 - 64. Distributes Optimized Nutritional Support of Hormones
 - 65. Replaces Entire Epidermal Cellular Matrix with Nutrition Supported Healthy Cells
- Proliferates Immune System Cells**
 - 66. Increases White Blood Cells (WBC) Migration
 - 67. Distributes WBC (Leukocytes) in the Epi/Dermis
 - 68. Leukocytes transform into Langenhaus Pathogen Removal Cells in Epidermis
 - 69. Langenhaus cells engulf Pathogens, then Reverse Migrate to Lymphatic system
 - 70. Langenhaus Cells assist the Proliferation of T-cells and B-cells immune response.
 - 71. Lymphocyte T-cell & B-cell replication triggered by WBC and Langenhaus Cells
 - 72. Lymphocytes spread to blood but especially numerous in the Lymph Nodes

- Ground Substance**
 - 73. Dermal Ground Substance is secreted by Fibroblasts
 - 74. Fibroblasts secrete Tropocollagen which solidifies to collagen fibers
 - 75. Increases Glycoprotein
 - 76. Increases Reticulin fibers
 - 77. Increases Elastin fibers
 - 78. Increases Glycosaminoglycans
 - 79. Increases Glycoproteins
 - 80. Increases Amino acid proteins
 - 81. Increases Proteoglycans:
 - 82. Increases Hyaluronic Acid,
 - 83. Increases Collagen
 - 84. Increases Elastin
 - 85. Increases Fibronectin
 - 86. Increases Laminin
- Collagen & Elastin**
 - 87. Increased C & E Peptides stabilize the Ground Substance
 - 88. Increased Collagen and Elastin improves Structural Integrity